



**India Meteorological Department  
(Ministry of Earth Sciences)**

**SPECIAL BULLETIN NO. 1**

**TIME OF ISSUE:1400 HOURS IST**

**DATED: 20.10.2022**

**FROM: INDIA METEOROLOGICAL DEPARTMENT (FAX NO. 24643965/24699216/24623220)**

**TO: CONTROL ROOM, NDM, MINISTRY OF HOME AFFAIRS (FAX.NO. 23093750)**

**CONTROL ROOM NDMA (FAX.NO. 26701729)**

**CABINET SECRETARIAT (FAX.NO.23012284, 23018638)**

**PS TO HON'BLE MINISTER FOR S & T AND EARTH SCIENCES (FAX NO.23316745)**

**SECRETARY, MOES (FAX NO. 24629777)**

**H.Q. (INTEGRATED DEFENCE STAFF AND CDS) (FAX NO. 23005137/23005147)**

**DIRECTOR GENERAL, DOORDARSHAN (23385843)**

**DIRECTOR GENERAL, AIR (23421105, 23421219)**

**PIB MOES (FAX NO. 23389042)**

**UNI (FAX NO. 23355841)**

**D.G. NATIONAL DISASTER RESPONSE FORCE (NDRF) (FAX NO. 26105912, 2436 3260)**

**DIRECTOR, PUNCTUALITY, INDIAN RAILWAYS (FAX NO. 23388503)**

**CHIEF SECRETARY, ANDAMAN & NICOBAR ISLANDS (FAX NO. 03192- 232656)**

**CHIEF SECRETARY, GOVT. WEST BENGAL (FAX NO. 033-22144328)**

**CHIEF SECRETARY, GOVT. OF ODISHA (FAX NO. 0674 -2536660)**

**CHIEF SECRETARY, GOVT. OF ANDHRA PRADESH (FAX NO. 0863-2441029, 08645-246600)**

**CHIEF SECRETARY, GOVT. OF TAMIL NADU (FAX NO. 044-25672304)**

**CHIEF SECRETARY, GOVT. OF PUDUCHERRY (FAX NO. 0413-2337575, 2334145)**

**Sub: Low Pressure Area over North Andaman Sea and adjoining areas & it's likely intensification into a Cyclonic Storm**

A Low Pressure Area formed over north Andaman Sea and adjoining areas of south Andaman Sea & Southeast Bay of Bengal in the morning of today, the 20<sup>th</sup> October, 2022.

It is very likely to move west-northwestwards and concentrate into a Depression over eastcentral & adjoining southeast Bay of Bengal around 22<sup>nd</sup> October and into a Deep Depression on 23<sup>rd</sup> October. Subsequently, it is very likely to recurve northwards and intensify into a cyclonic storm over westcentral and adjoining eastcentral Bay of Bengal by 24<sup>th</sup> October. Thereafter, it is likely to move gradually north-northeastwards and reach near West Bengal - Bangladesh coasts on 25<sup>th</sup> October, skirting Odisha coast.

**Warnings:**

**(i) Rainfall (warning graphics enclosed)**

**20<sup>th</sup> to 22<sup>nd</sup> October:** Light to moderate rainfall at most places with heavy rainfall at isolated places over Andaman & Nicobar Islands

**23<sup>rd</sup> October:** Light to moderate rainfall at most places with heavy rainfall at isolated places over Andaman & Nicobar Islands

**24<sup>th</sup> October:** Light to moderate rainfall at many places with heavy to very heavy rainfall at isolated places over costal districts of Odisha and West Bengal.

**25<sup>th</sup> October:** Light to moderate rainfall at most places with heavy to very heavy rainfall at a few places over costal districts of Odisha and West Bengal.

**(ii) Wind warning:**

**21<sup>st</sup> October:** Squally weather with wind speed reaching 40-45 kmph gusting to 55 kmph is very likely over southeast Bay of Bengal & adjoining eastcentral & Andaman Sea and Andaman & Nicobar Islands

**22<sup>nd</sup> October:** Squally weather with wind speed reaching 45-50 kmph gusting to 60 kmph is very likely over eastcentral & adjoining southeast Bay of Bengal.

**23<sup>rd</sup> October:** Squally wind speed reaching 50-60 kmph gusting to 70 kmph is very likely over westcentral and adjoining eastcentral & southeast Bay of Bengal.

**24<sup>th</sup> October:** Gale wind speed reaching 60-70 kmph gusting to 80 kmph is likely over westcentral and adjoining eastcentral & north Bay of Bengal.

**25<sup>th</sup> October:** Gale wind speed reaching 70-80 kmph gusting to 90 kmph is likely over north and adjoining central Bay of Bengal.

**(iii) Sea condition**

**21<sup>st</sup> October:** Sea condition is very likely to be rough over southeast Bay of Bengal & adjoining eastcentral & North Andaman Sea

**22<sup>nd</sup> October:** Sea condition is very likely to be rough to very rough over central & adjoining southeast Bay of Bengal.

**23<sup>rd</sup> October:** Sea condition is very likely to be very rough over westcentral and adjoining eastcentral & southeast Bay of Bengal.

**24<sup>th</sup> October:** Sea condition is likely to be high over westcentral and adjoining eastcentral & north Bay of Bengal.

**25<sup>th</sup> October:** Sea condition is likely to be high over north and adjoining central Bay of Bengal.

**(iv) Fishermen Warning (warning graphics enclosed)**

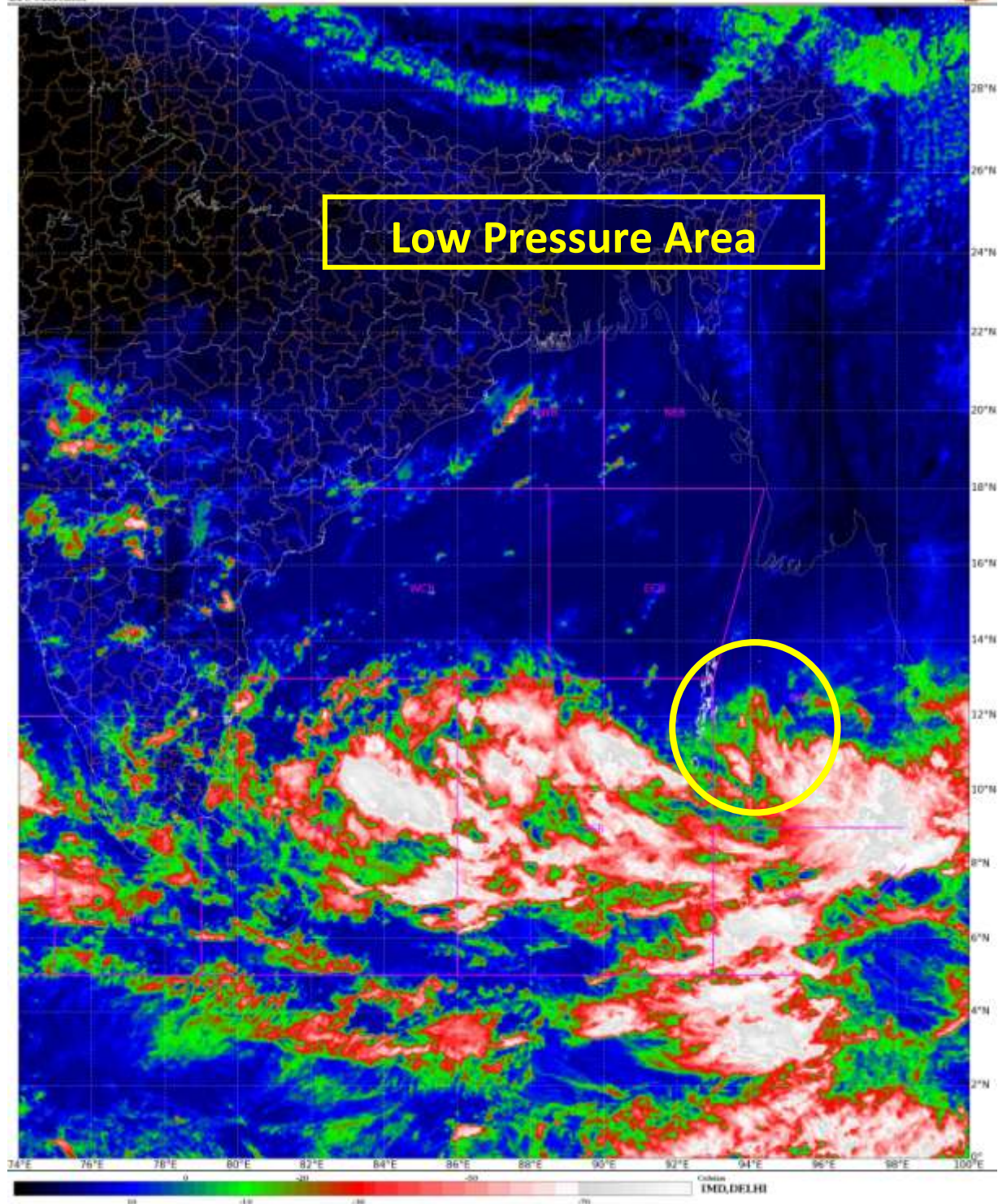
Fishermen are advised not to venture into southeast & adjoining eastcentral Bay of Bengal & North Andaman Sea on 21<sup>st</sup>, into central & adjoining southeast Bay of Bengal on 22<sup>nd</sup>, into central Bay of Bengal on 23<sup>rd</sup>, into central & adjoining northwest Bay of Bengal on 24<sup>th</sup> and into north & adjoining central Bay of Bengal on 25<sup>th</sup> October, 2022.

**The system is under continuous surveillance and the next message will be issued at 1130 hours IST of tomorrow, the 21<sup>st</sup> October, 2022.**

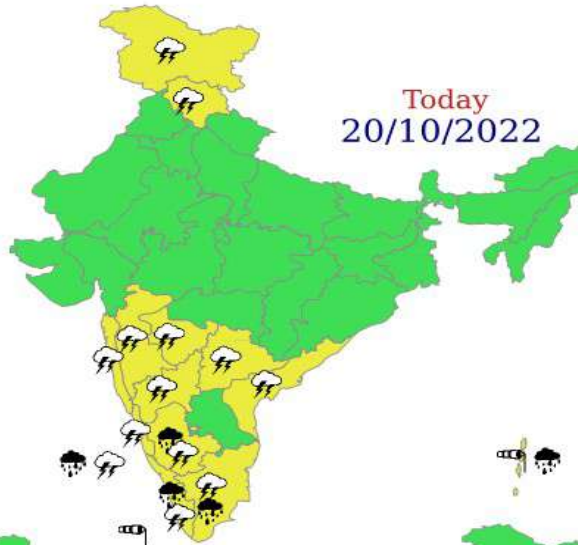
**(Ananda Kumar Das)  
Scientist E, Cyclone Warning, New Delhi**

*Copy to: ACWC Kolkata/ ACWC Chennai/ CWC Bhubaneswar/CWCVisakhapatnam/MO Port Blair*

**LEGEND: Heavy Rainfall:** 64.5 to 115.5mm, **Very Heavy Rainfall:** 115.6 to 204.4mm **Most Places:** more than 76% of total stations, **Isolated Places:** Less than 25% of total



Today  
20/10/2022



**WARNING**



Tomorrow  
21/10/2022



22/10/2022



23/10/2022



24/10/2022



- |  |  |  |  |
|--|--|--|--|
|  Heavy Rain   |  Heavy Snow |  Thunderstorm |  Dust Storm   |
|  Strong Winds |  Visibility |  Cyclone      |  Squall/ Hail |
|  Frost        |  Cold Wave  |  Heat Wave    |  Sea State    |

## Fishermen warning graphics

